
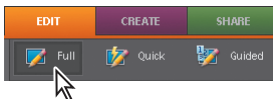


ADOBE PHOTOSHOP ELEMENTS

Correcting images automatically as batch process

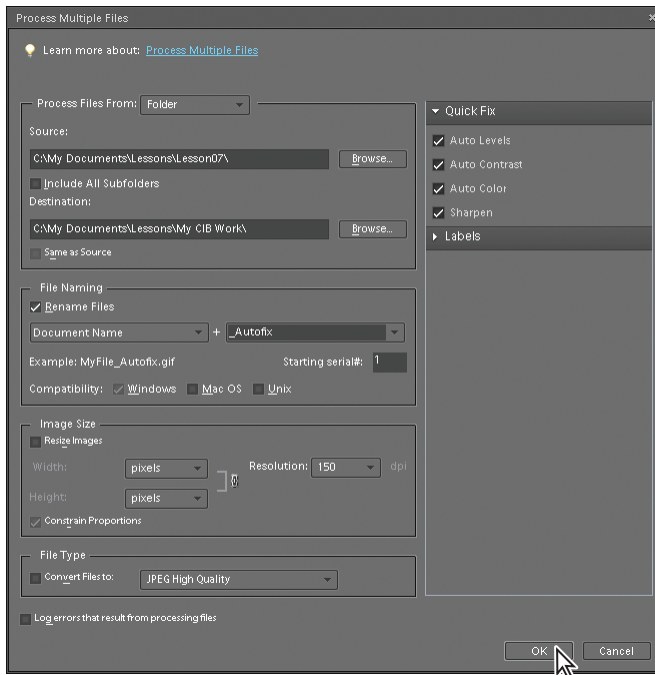
For this lesson, you should copy several pictures into a folder, put the folder onto the desktop, then start this lesson.

- 1) Start Photoshop Elements in Full Edit mode by clicking Edit in the Welcome Screen. Or, if the Organizer is already open, click the Editor button () located near the top right corner of the Organizer window, and then choose Full Edit from the menu.
- 2) If the Editor is already open from an earlier exercise, switch to Full Edit mode if necessary, by clicking the Full tab in the Edit pane of the Task panel.



- 3) Choose File > Process Multiple Files.
- 4) In the Process Multiple Files dialog box, do the following:
 - Choose Folder from the Process Files From menu.
 - Under Source, click Browse. Find your folder of pictures on the desktop. Click OK to close the Browse for Folder dialog box.
 - Under Destination, click the same as source option. **Note:** *If you do not wish to replace these files with modified versions then select a different folder for Photoshop Elements to put the edited files.*
- 5) Under File Naming, select Rename Files. Select Document Name in the first field, and type **_Autofix** in the second field. This adds the appendix “_Autofix” to the existing document name as the files are saved.
- 6) Under Quick Fix on the right side of the dialog box, select all four options: Auto Levels, Auto Contrast, Auto Color, and Sharpen.
- 7) Review all selections in the dialog box, comparing them to the following illustration. Make sure that the Resize Images and the Convert Files to options are not

selected. Then, click OK.



Photoshop Elements takes a few seconds to process the files. Image windows will open and close automatically as the adjustments are applied. There's nothing else you need to do. If any alerts or warnings are displayed, click OK.

At the end of this lesson, you can compare the results of this simple, automatic fixing of the images with the results from applying the manual techniques in the exercises. In many cases, the automatic method of fixing files may be sufficient to meet your needs.

Excerpted from "Adobe Photoshop Elements 6 and Adobe Premiere Elements 4 Classroom in a Book," by Adobe Creative Team. Copyright 2007. All rights reserved. Pearson Education, Inc. and Adobe Press. www.adobe.com